



**Create together,
learn together**



Empowering educators & transforming learning spaces

Contents

| | |
|---|--------------|
| Why Optoma as your visual solutions partner | 4-5 |
| Education solutions for all spaces | 6-7 |
| OSS – transform teaching | 8-13 |
| Hardware solutions for education | 14-27 |
| Software solutions for education | 28-33 |
| Testimonials | 34-35 |
| Service - Customer service & support | 36-37 |

Your visual solutions partner for creative learning

Optoma offers schools an ecosystem of visual display technology and software that creates a collaborative, intuitive, and productive classroom environment – from interactive, LCD, and LED displays, to projectors and management software. The Optoma platform seamlessly integrates with devices from other manufacturers, ensuring compatibility and flexibility within your existing infrastructure.

By integrating cutting-edge hardware, intuitive software, and dedicated service solutions, Optoma empowers schools to transform classroom experiences. Optoma's mission is to equip educators with the tools they need to inspire, engage, and personalise learning, creating a sustainable and future-ready education ecosystem. Together, we make every lesson impactful and every learning journey extraordinary.



Why Optoma?

Optoma is a global leader that adopts a local, customer-minded approach to delivering impactful digital solutions and services in more than 150 countries worldwide. With more than 25 years of visual technology innovation and experience, Optoma provides adaptable visual solutions that empower users through simple and easy-to-use technology.

United by an ambition and passion to transform education, Optoma is committed to building strong partnerships with school leaders, teachers and IT managers to create truly interactive classrooms and foster solutions that support transformative teaching and learning.



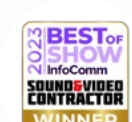
150+
countries



25+
years of
innovation



150+
Multi-award
winning





Empowering educators & transforming learning spaces



Education solutions for all spaces



Hardware

Transforming learning for every classroom

Our innovative solutions adapt to any classroom environment, empowering teachers to create engaging lessons that inspire students to learn and enjoy every moment.



Software

Revolutionising learning

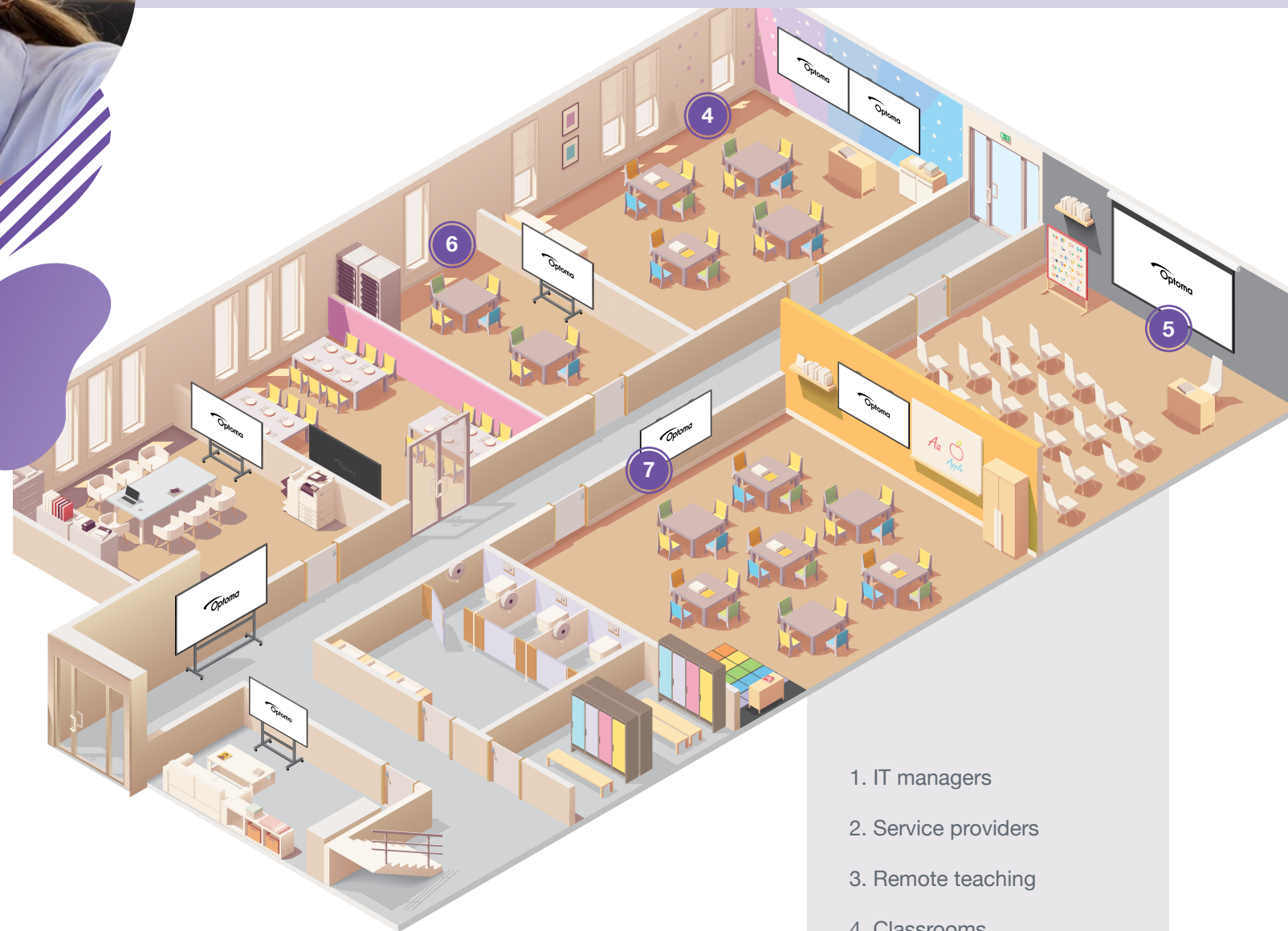
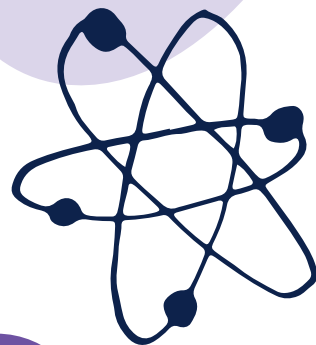
Optoma's intuitive software solutions improve classroom experiences by enabling seamless collaboration, interactive lessons, and easy management, helping educators deliver engaging and effective learning.



Service

Enhancing education with expert support

Optoma offers a dedicated Service to help educators seamlessly integrate visual solutions and create dynamic, engaging learning environments.



1. IT managers
2. Service providers
3. Remote teaching
4. Classrooms
5. Auditoriums/school halls
6. Creative learning spaces
7. Big-screen digital signage





Simplify and transform every stage of teaching

Optoma Solution Suite (OSS) empowers teachers with innovative and creative tools to transform their classrooms and teach their way. By providing access to a multitude of media types and resources, teachers can easily customise learning experiences to meet individual student needs.

OSS offers a simple, streamlined interface that makes it easy to:

Prepare: Effortlessly access and adapt ready-made resources.

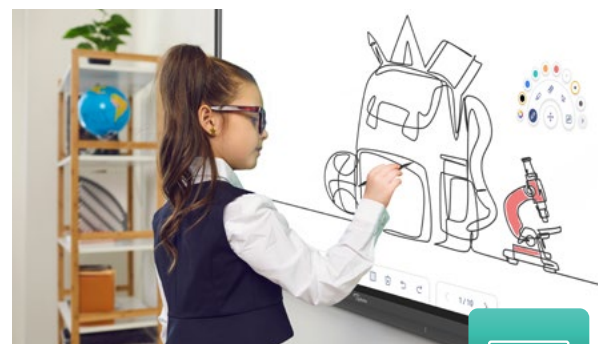
Teach: Foster engaging lessons with real-time collaboration tools.

Review: Easily review and share materials to reinforce learning.

Designed for both teachers and IT managers, OSS streamlines the teaching process, making education more impactful and efficient.



Technology partners



Whiteboard

Empowering collaboration

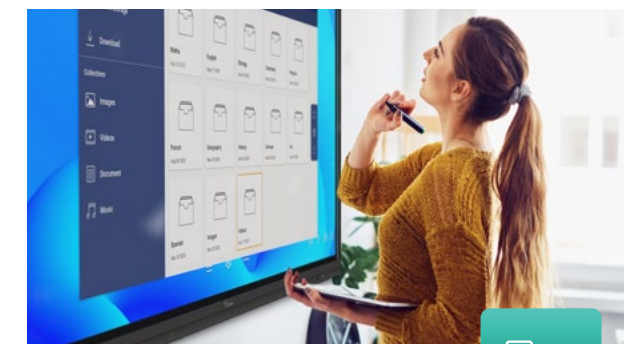
Engage your students. Creative sharing is easy with built-in annotation tools to help facilitate collaboration in the classroom. Designed for hybrid learning - Whiteboard provides smart collaboration and connectivity features for any classroom.



Display Share

Wireless sharing

Connect any device. Wirelessly broadcast, share or stream your content to the big screen with Display Share. Screen mirror high-quality images, video, documents and audio from your smartphone, laptop or PC - all with a touch of a button. Bringing your own device has never been easier.



File Manager

Expandable cloud storage

Easily save files, organise them or move them from local storage to networkable storage. Even move files to popular cloud services in seconds (Dropbox, OneDrive and Google Drive).

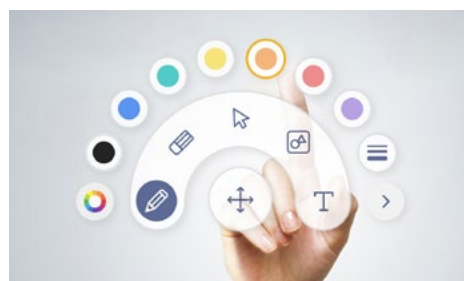




Create, connect & collaborate with Whiteboard



Inspire creativity and collaboration with our intuitive annotation tools. Designed for both in-person and remote learning, Whiteboard offers smart collaboration features that connect classrooms. Effortlessly teach remotely, with multiple teams or students collaborating in real-time from different locations.



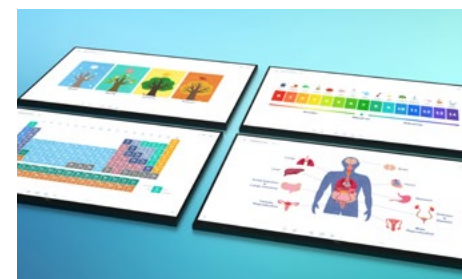
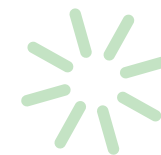
Change tools at a touch with our floating toolbar

Easily move and position the toolbar anywhere on the infinity canvas. Instantly select tools or choose different pen settings for smooth and flowing lessons.



Access websites without leaving the Whiteboard

Enhance your lessons and keep ideas flowing. Easily drag and drop images and video content from the embedded browser directly into the Whiteboard canvas.



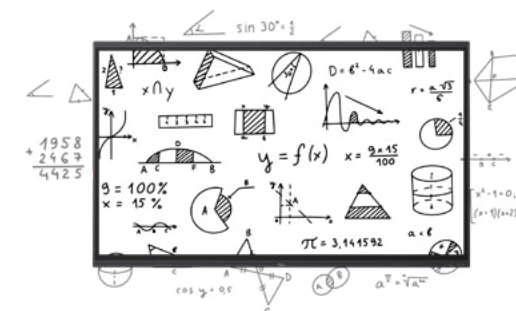
Access to templates and stickers - ideal for lesson content

Enhance your lessons and keep ideas flowing. Easily drag and drop images and video content from the embedded browser directly into the Whiteboard canvas.



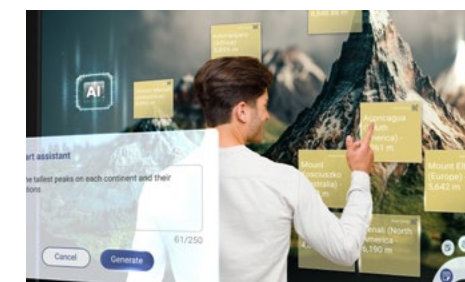
Seamlessly integrate with Google Classroom

Use the tools you already know and like. With easy integration with Google Classroom, teachers can create and import lesson materials from anywhere. Single sign-on (SSO) allows for quick syncing, bringing the power of paperless sharing and digital collaboration to the classroom. Work on lesson plans at home and effortlessly transfer them to any classroom.



Never run out of space with our infinity canvas

Draw anywhere, insert images and shapes, all of which can be saved, printed or shared with student devices, the infinity canvas will not limit your creativity and expands your workspace.



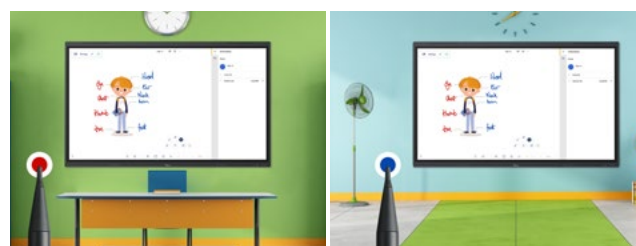
Experience the power of AI

Effortlessly brainstorm, write, and calculate with our AI-enabled Whiteboard. Generate sticky notes from text, enhance handwriting with seamless conversion and precise shapes, and solve equations directly on the board. Unleash creativity and boost productivity.



Teaching without limits: Display Share & Cloud Whiteboard

With Display Share and our intuitive Cloud Whiteboard, teaching transcends the physical classroom. Seamlessly stream lessons remotely and foster real-time collaboration, enabling students to engage and learn together from anywhere. Redefine teaching for the modern classroom and unlock a world of interactive learning possibilities.

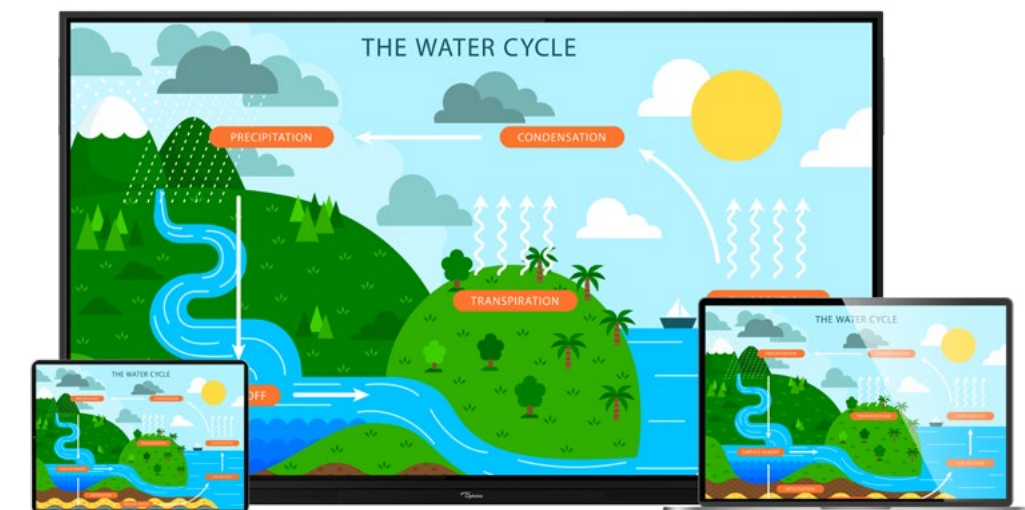


School 1

School 2

Seamless collaboration with cloud Whiteboard

Sync with your cloud accounts to effortlessly plan lessons and access teaching materials from any Optoma Creative Touch display in your school. Collaborate seamlessly in Whiteboard across multiple displays, enabling real-time teaching and teamwork regardless of location.



Effortless screen sharing with display share

Connect any device and effortlessly share your content on the big screen with Display Share. Wirelessly mirror high-quality images, videos, documents, and audio from your smartphone, laptop, or PC with a single touch.

Bringing your own device (BYOD) has never been easier, empowering students and teachers with flexible and engaging learning experiences.



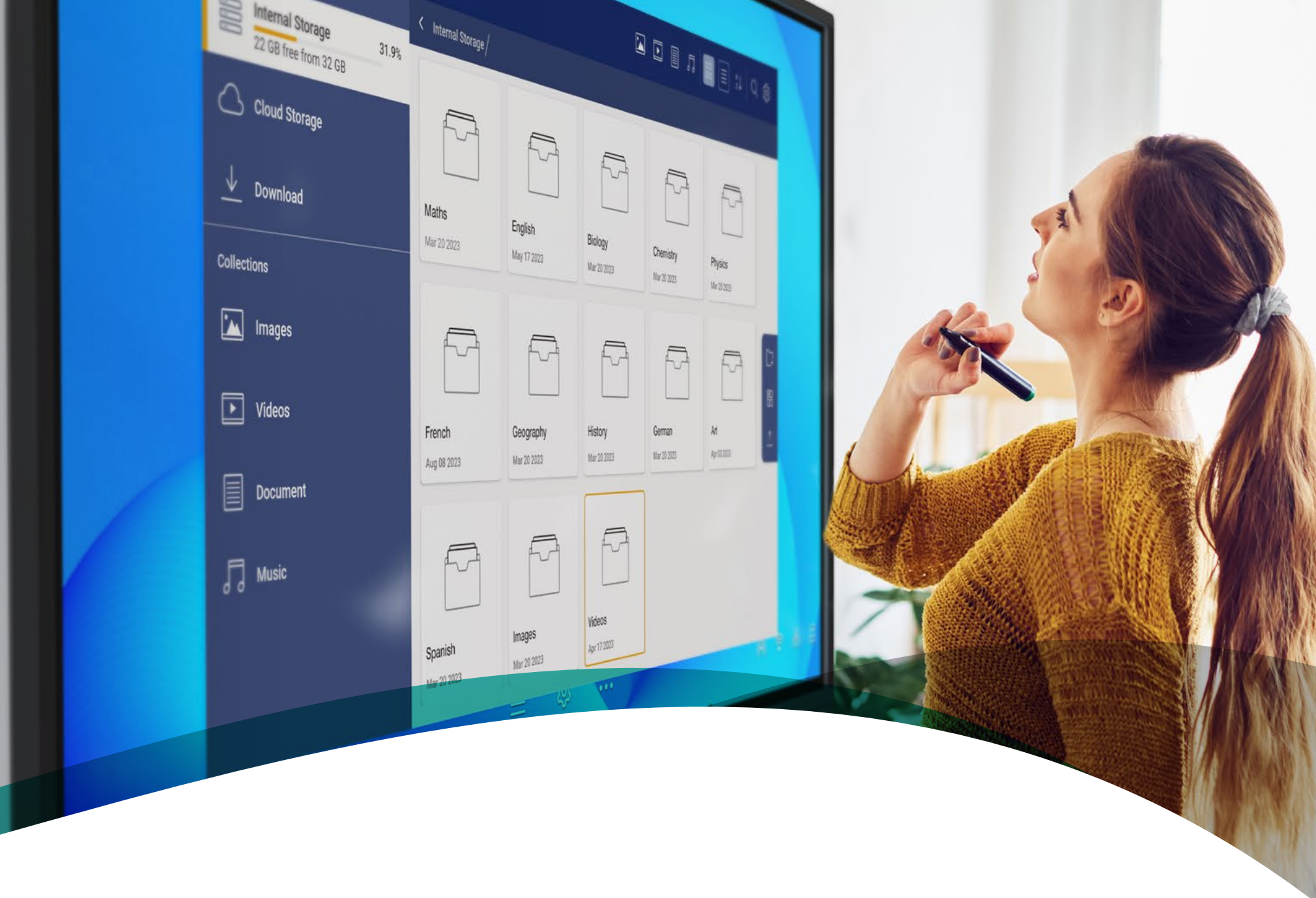
Whiteboard for web: Empowering remote learning

Whiteboard for Web offers the ultimate solution for seamless collaboration and remote education. Our proprietary software brings the power of cloud syncing and real-time collaboration to your fingertips, accessible on any tablet or smartphone. Teachers can now effortlessly share and broadcast Whiteboard teaching materials remotely, empowering students with an immersive learning experience no matter where they are.



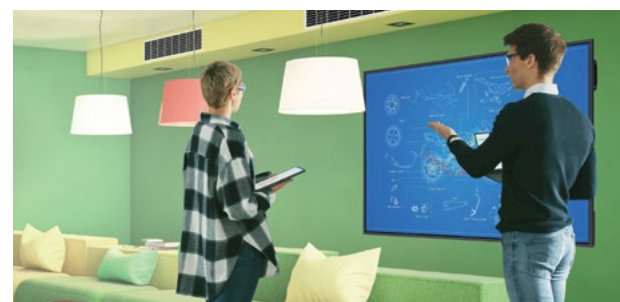
The complete visual solution for education

Optoma offers schools an ecosystem of visual hardware and software technology solutions that create a collaborative, intuitive and productive classroom environment – from interactive, LCD and LED displays, to projectors and management software.



Interactive displays

Optoma interactive flat panel displays (IFPDs) are designed to transform your classroom into an engaging and interactive learning space.



Professional displays

Elevate your school's communication with our advanced non-interactive professional displays for effortless connecting, presenting, and sharing.



Projectors

Optoma's cutting-edge laser and LED projectors deliver stunning visuals and long-lasting reliability of up to 30,000 hours.



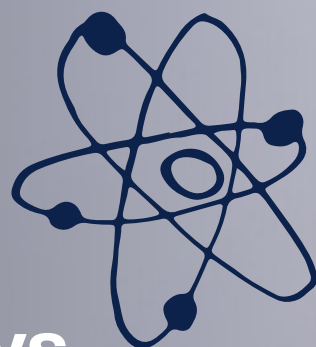
LED displays

Our all-in-one LED displays offer a versatile and user-friendly large display solution for various spaces, including auditoriums, reception areas, and multipurpose rooms.

Interactive displays

Elevate your classroom

Optoma interactive flat panels (IFPs) are designed to revolutionise education. Teachers can easily integrate them with our software solutions to deliver dynamic and engaging lessons. IT managers benefit from their reliability, easy deployment, and scalability. Students can collaborate with classmates and improve their learning outcomes through interactive content. With Optoma IFPs, classrooms can embrace the future of education.



Optoma Solution Suite

OSS provides teachers with a comprehensive set of tools to enhance classroom engagement. This powerful platform includes resources for lesson planning, presentation, collaboration, and more, empowering educators to deliver dynamic and personalised learning experiences.



Connect across platforms

Connect any device. Wirelessly broadcast, share or stream your content to the big screen with Display Share. Screen mirror high-quality images, video, documents and audio from your smartphone, laptop or PC – all with a touch of a button. Bringing your own device has never been easier.



Optoma Management Suite

OMS provides centralised control and remote monitoring to ensure classrooms stay connected. Leverage display technology for dynamic signage, live broadcasts, and critical safety alerts – designed for effortless management by teachers and IT managers.



5-Series

5653RK / 5753RK / 5863RK

The 5-Series interactive display transforms ordinary classrooms into extraordinary learning spaces. With powerful features and intuitive design, you can focus on what truly matters: inspiring students.

Powerful hardware

- Octa-core Processor
- Android 13 OS
- Wi-Fi 6E support (Optional)

Stunningly clear 4K resolution

4K Ultra HD resolution for great images, graphics, and videos

Collaborative learning

Up to 50 touch points (Windows), 32 points (Android), allowing multiple users to interact with the display simultaneously

Natural writing experience

The 4096-level pressure sensitivity allows for precise writing, drawing and annotation, while the quick launch pen ensures lessons start in seconds

Smart air quality sensor

Monitor temperature, humidity, CO2, and PM2.5 levels in real-time to ensure optimal learning conditions

Smart account login

Quick and secure QR code and NFC login



Sizes: 65" / 75" / 86"

Google EDLA certification

Advanced security measures and seamless integration with the Google ecosystem, including Google Workspace, and Microsoft 365 suite. Access Google accounts, files, and collaborative tools directly from the display

Premium sound quality

Enjoy high-quality audio with a subwoofer and built-in 8-mic array

Sync with cloud accounts

Work anywhere and any time with access to your local or cloud files



Built-in software suite

Optoma Solution Suite (OSS) provides a comprehensive set of tools to enhance classroom engagement:

- **Whiteboard** – digital whiteboarding with infinity canvas and embedded browser
- **Display Share** – Wirelessly broadcast, share or stream your content
- **File Manager** – Expandable cloud storage



Efficient display management

Monitor, schedule, broadcast, and manage multiple displays simultaneously from any location



Mozaik education software

Free 1-year subscription of mozaBook education software with your Optoma interactive display



Key Features



Seamlessly integrate with Google Classroom



Infinity canvas with Whiteboard



Wireless casting and sharing with Display Share



Remotely manage your displays



Anti-glare and anti-fingerprint glass



2x 18W speakers
2x 8W subwoofers



Ultra-versatile quick launch pen



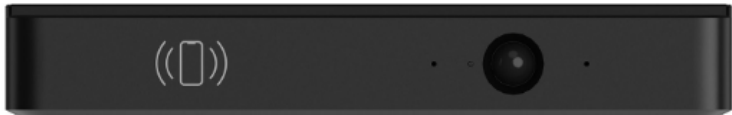
Android 13 OS

Display accessories



Single swipe secure login

A NFC card reader provides a secure, single swipe login. And our intelligent air quality sensor monitors temperature, humidity, CO2, and PM2.5 levels for an optimal learning environment.



Whiteboard overlays

Turn your display into a versatile writing surface with our seamless whiteboard overlays. Ideal for collaborative learning and brain storming sessions.



Enhance your learning space

Equip your classroom with the tools to enhance learning and collaboration.

USB conference camera

Facilitate remote collaboration with high-quality video and audio.



Bluetooth speaker

Ensure clear audio in every corner of the room. Ideal for group discussions and presentations.



WiFi Bluetooth module

Connect wirelessly to devices and networks. Simplify setup and reduce cable clutter.



OPS

Enhance your display's capabilities with our compact, slot-in PC. Eliminate the need for a separate computer, simplifying setup and management.

Operating system not included.

Trolleys & mounts

Choose from our range of compatible trolleys and mounts to suit your classroom needs. Opt for a motorised trolley for effortless movement around the room or a wall mount for a fixed installation.



Document cameras

Bring your lessons to life with detailed visuals and experiments. Our document cameras are perfect for capturing and sharing science experiments, art projects, and close-up demonstrations with your entire class.

Projectors for education

Optoma's cutting-edge laser and LED projectors deliver stunning visuals and long-lasting reliability of up to 30,000 hours. Our casting solutions empower seamless content sharing, fostering collaboration.

Classrooms

Ultra short throw and standard throw projectors



ZH430UST

Compact, ultra short throw 4000-lumen laser projector. Projects 100" images from 50cm away, eliminating presentation shadows.

- Bright 4000 lumens
- Ultra short throw lens
- Full HD 1080p resolution



ZH507+

Bright, 5500-lumen laser projector offers smart features, USB-A connectivity, and a wireless adapter for WiFi and app integration. It's also compatible with OMS.

- Bright 5500 lumens
- Full HD 1080p resolution
- 1.6x zoom, vertical lens shift and portraitmode

Wireless casting solutions

Seamless content sharing



WHD211

The WHD211 enables a quick set-up in meetings for easy collaboration in the modern workplace. Content can be instantly transferred from any device using HDMI connection.

- Easy-to-use collaboration solution - no wires or software
- Instantly transfer content from any device
- Hassle-free presentations at the click of a button

WHD221

The WHD221 enables a quick set-up in meetings for easy collaboration in the modern workplace. Content can be instantly transferred from any device via USB-C.

- Easy-to-use collaboration solution - no wires or software
- Instantly transfer content from any device
- Hassle-free presentations at the click of a button

Auditoriums and lecture halls

Short throw and standard throw projectors



ZH350

Compact 3600-lumen laser projector with 360-degree and portrait mode operation. Also includes an RS232 connection for monitoring and control.

- Bright 3600 lumens
- Full HD 1080p resolution



ZH350ST

Compact laser projector with short throw capabilities, for placement within half a metre of any wall. Featuring 360-degree and portrait mode operation and an RS232 connection for monitoring and control.

- Bright 4000 lumens
- Short throw lens
- Full HD 1080p resolution



ZH520

Compact high brightness laser projector with 360-degree and portrait mode operation, and an RS232 connection for monitoring and control.

- Bright 5500 lumens
- Full HD 1080p resolution
- 1.3x zoom for a flexible setup



ZH450ST

Compact high brightness laser projector with short throw capabilities, for placement within half a metre of any wall. Featuring 360-degree and portrait mode operation and an RS232 connection for monitoring and control.

- Bright 4200 lumens
- Short throw lens
- Full HD 1080p resolution



Enhance communication & elevate student engagement

Elevate your school’s communication with our advanced professional displays. Available in sizes 55 to 98 inches, these displays offer stunning 4K Ultra HD resolution, ensuring crystal-clear visuals that captivate and educate.

With user-friendly software and seamless integration with Optoma Management Suite (OMS), you can easily manage and share content across your school. From classroom lessons to important announcements, our displays provide a flexible and efficient solution.



N-Series

- 4K Ultra HD resolution, 55 - 98 inches stream
- 24/7 operation for uninterrupted functionality
- Built-in apps for connecting, presenting, and collaborating globally
- Intuitive media player and scheduling tools
- Supports both portrait and landscape orientation

Professional displays for education

Designed for 24/7 operation in demanding school environments, Optoma N-Series professional displays ensure uninterrupted functionality. These non-interactive displays enable seamless global collaboration with built-in apps for effortless connecting, presenting, and sharing. An intuitive media player simplifies content management, while flexible scheduling tools optimise classroom utilisation. Furthermore, the N-Series supports both portrait and landscape orientations, providing versatility and adaptability to suit diverse learning needs and space constraints.



Versatile and user-friendly large display solution for your school

Elevate your space for engaging learning

All-in-one LED display solutions

The all-in-one FHDQ135S LED display is perfect for various spaces, including auditoriums, reception areas, and multipurpose rooms.

Its energy-efficient design helps reduce running costs, while built-in speakers eliminate the need for additional equipment. Plus, stunning visuals and clear audio make it ideal for engaging both teachers and students.

With built-in media player and scheduling functionality, you can easily create, customise, and schedule your own media playlists via Optoma Management Suite (OMS). Display important announcements, school events, and inspiring messages to create a positive and engaging atmosphere.



FHDQ135S - Wall-mount for communal spaces or use with a stand for added flexibility

- **Stunning visuals:** The high-brightness display and Full HD resolution deliver crystal-clear images that captivate audiences.
- **Audio:** Built-in speakers provide high-quality sound without the need for additional equipment.
- **Easy installation and maintenance:** The all-in-one design simplifies setup and reduces ongoing maintenance costs.
- **Remote management:** Optoma Management Suite (OMS) enables remote monitoring and control, ensuring optimal performance.



Smart control for seamless learning

Ensure seamless learning with centralised control and remote monitoring of mixed-brand display devices across classrooms and campuses. Maximise uptime while utilising display technology for simple signage and scheduled broadcasts. Deliver clear guidance and ensure safety during emergencies with ease.



OMS
More than just device management

Designed for effortless management by IT managers and service providers

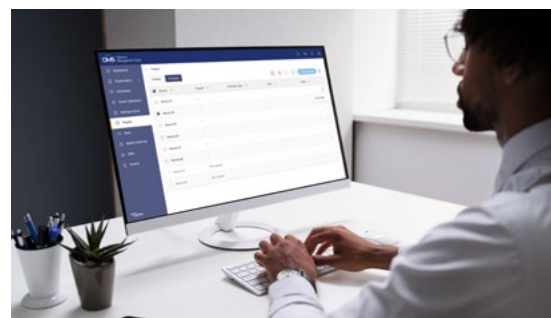


OMS delivers greater intelligence to drive better results



IT manager: Secure network environment

A secure way to manage and control displays. Ensure that unauthorised access to the network or individual display is prevented.



Service providers: Single dashboard

Allows support desk to manage multiple displays from a single central platform without switching to different tools.



Single pane of glass

A Single dashboard to monitor multi brand display devices with instant error notifications.



Instant multimedia broadcast

Text, images, audio, and even YouTube videos can be instantly broadcast to any display device.



24/7 device history access

Device data including command history, system update logs, usage data available anytime on the cloud.



Classroom availability

Monitoring all connected display estates to ensures minimal device downtime.



Flexible IT options

OMS is available on Cloud, Hybrid, or On-Premise for your IT and security needs.



Eco-friendly

Reduce carbon footprint with less travel for on-site maintenance



Optoma Solution Suite

Create. Connect. Collaborate.



Optoma Management Suite

More than just device management



Whiteboard

Empowering collaboration



Display Share

Wireless sharing



File Manager

Expandable cloud storage

Standard

- Up to 5 devices
- 1 User account
- 1GB cloud storage

Meeting and learning space designed for the IT Manager

Advanced

- Up to 20 devices
- 20 user accounts
- 15GB cloud storage

Single estate location for organisations and schools

Professional

- Up to 50 devices
- 50 user accounts
- 50GB cloud storage

Single estate location designed for the IT Manager and service providers

Technology partners



Google for Education Partner

Custom

Designed for 50+ devices

Cater to multiple geographies and locations

Key features

| | |
|--|---|
| Online session build | ✓ |
| Real-time collaboration | ✓ |
| Infinite: canvas pages files | ✓ |
| Ready made multi-subject education templates | ✓ |
| Miracast chrome cast airplay mirroring | ✓ |



FREE DEMO

Key features

| Key features | Standard | Advanced | Professional |
|----------------------------|----------|----------|--------------|
| Historical data reports | 30 days | 30 days | 30 days |
| Real-time monitoring | ✓ | ✓ | ✓ |
| Centralised device control | ✓ | ✓ | ✓ |
| Multimedia broadcast | ✓ | ✓ | ✓ |
| Alerts by email | | ✓ | ✓ |



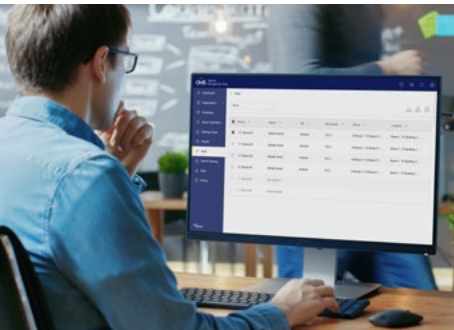
FREE DEMO

Hyve

Brings centralised control and cloud-driven collaboration to legacy displays



For teachers
Optoma Solution Suite® (OSS) for a unified interface
Hyve provides all devices with a unified interface, with OSS features like Whiteboard, File Manager, and Display Share to boost efficiency. With one platform, there's less time needed for training and more time available for teaching.



For IT managers
Optoma Management Suite® (OMS) for device management
Manage new and old AV systems together, controlling everything through OMS, even across global enterprises. No more headaches—just streamlined control.



For decision makers
Breathe new life into legacy displays
Boost productivity by reducing the need for constant upgrades. Hyve updates legacy displays, saving costs and simplifying collaboration with one powerful, easy-to-use system.



FREE DEMO



Testimonials



Sussex learning trust choose Optoma

Sussex installed ten Optoma interactive flat panel displays across the different departments and schools.

Sussex Learning Trust is responsible for the successful management and development of three schools: Warden Park Secondary Academy in Cuckfield, and Warden Park Primary Academy and Northlands Wood Primary Academy in Haywards Heath.



Optoma interactive displays set the standard at Southmead Primary School

Southmead Primary School selected Optoma interactive flat panel displays

Southmead Primary School is a friendly, caring school that put pupils at the centre of everything they do. Situated in North Devon, with fourteen classrooms, and children ages 4-11 years of age, they take pride in the beautiful area they are located in and make the most of the local environment, working with the local community wherever possible.

“The children have shared their Pupil Voice – they really like the screens. Staff use the screens more frequently due to their reliability and improved touch sensitivity.”

Nick Plumb, Headteacher at Southmead Primary School

“The technology is being embraced. It’s been a challenging year for everyone; with the addition of hybrid learning - there has been lots to learn. There is now an understanding of how technology can improve the classroom and everyone is enjoying the technology.”

Dave Lang, Digital Services Technical Manager at Warden Park Secondary

View all case studies



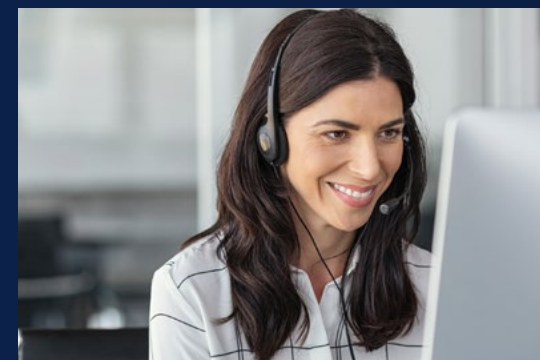


Customer service and technical support is our priority.

Receive the best service

Optoma is dedicated to supporting schools on every step of their digital transformation journey, providing bespoke customer care that maximises the impact of investment and fosters smooth integration and engagement with staff.

Providing the best service and support for our customers and satisfaction is our number one priority. We encourage feedback pre and post purchase so we may continue to exceed customer expectations.



Technical support

Optoma's dedicated customer support team is available to answer all your questions.



Our guarantee

Extended warranty options are available. To register or activate a warranty, [click here](#).





Service and Support

[More information](#)



Request a demo

[More information](#)



Contact us

[More information](#)

Certifications and partners



optomaeurope.com



Copyright © 2025, Optoma and its logo is a registered trademark of Optoma Corporation. Optoma Europe Ltd is the licensee of the registered trademark. Google Play and the Google Play logo are trademarks of Google LLC. App Store® and Apple logo® are trademarks of Apple Inc. All other product names and company names used herein are for identification purposes only and may be trademarks or registered trademarks of their respective owners. Errors and omissions excepted, all specifications are subject to change without notice. All images are for representation purposes only and may be simulated. 06/03/25